



Model No 12



Model No 6



Model No 8

The Thermostatic cores in our steam shower cabins differ depending on the type of assembly you have. We are not always able to determine which core model you require even by the model number of your cabin, as the manufacturers can, and do make changes to improve the product range.

Please remove your old thermostatic core and compare it to the images above and notify us which type you require (Model 12, Model 6 or Model 8).

The Thermostatic Core within our steam shower cabins typically last the lifetime of the cabin. However if you are having to replace yours within just a few weeks or months, this would indicate that you probably have an in-balance of water pressures to your cabin. It is therefore important that you get a qualified plumbing specialist to test and make adjustments to your water pressures (if required) before installing a new core.

If you are requesting a replacement thermostatic core under warranty, we may require you to send us proof that the water pressures are balanced and between 1-3bar before sending you a new one. Alternatively if you have your completed installation certificate to hand, then send us that as proof the water has been checked.

Instructions for replacement of thermostat core

Thermostatic cores are often supplied 'wet'
this is because they are tested during the production.

**BEFORE STARTING ENSURE THAT THE WATER & ELECTRICAL SUPPLIES
ARE DISCONNECTED**

**It is imperative that you check and ensure that the water supply to your unit is
balanced with a pressure of between 1 and 3 bar as an imbalance will damage the core. If you
have a Combi boiler, then the fitting of a pressure equalising valve will be required.**

1. Remove the temperature selector control knob.



2. Remove the Plastic Temperature Safety Guard from the Brass spline.

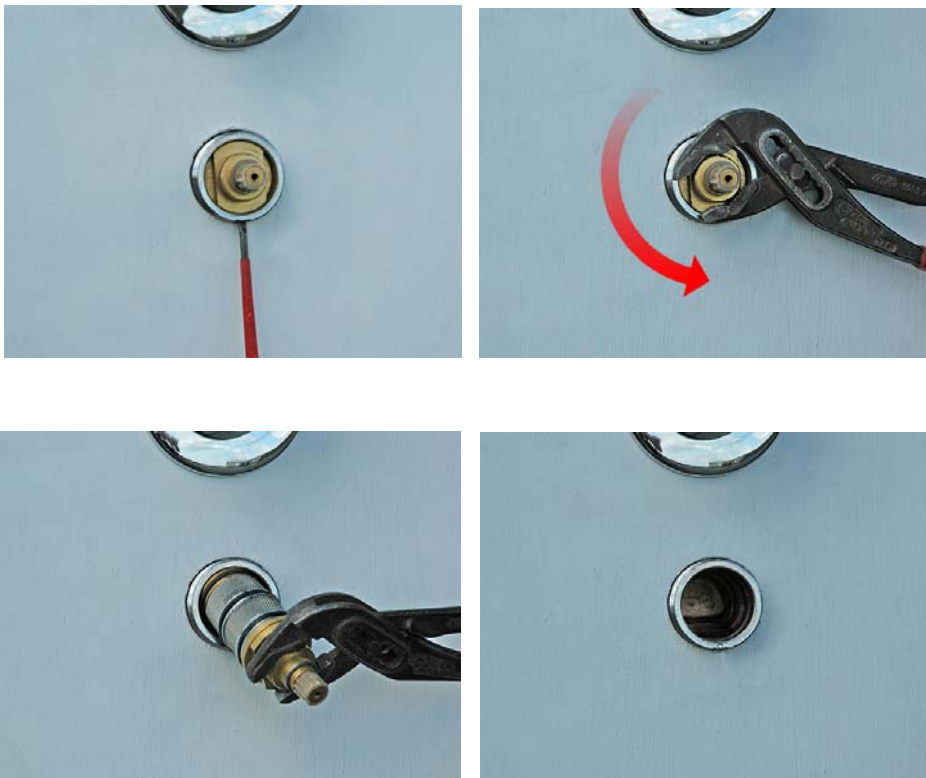


3. Unscrew chrome Temperature face plate as shown.



4. Remove the retaining grub screw, then using pipe grips as shown in photo, twist the thermostat core left and right whilst pulling it from its housing. (It is held in position by a rubber washer so you will feel it pop out of position)

NOTE: If you cannot find a grub screw as detailed above then your thermostatic core may be a Type 8. To remove the core simple un-screw it anti-clockwise to remove.



5. Refitting the new thermostat is a reversal of the above.